



# CLEAN & GREEN 2024

*Working together for a brighter future*



YOUR ONE STOP FOR SERVICE

Receiving service from the city of Glendale is now as easy as 1-2-3!



- 1.** Simply go to [www.GlendaleOne.com](http://www.GlendaleOne.com) or download the GlendaleOne mobile app from the App Store or Google Play.
- 2.** Give us the location where service is needed, select the type of service needed, and opt-in for automatic updates or create an account (optional).
- 3.** Submit your request and receive a confirmation number that includes the expected turnaround time for the issue.

GlendaleOne is easy to use, increases accessibility to city services, and improves service delivery and communication city-wide.

**Key features include:** Automatic escalation to a supervisor if there is a delay, knowledge base of frequently asked questions, automatic location identification and map integration and the ability to include photos or other documents with your service request.

*Outstanding service is our priority, and GlendaleOne demonstrates our commitment to deliver excellence and innovation as we strive to make Glendale the community of choice for residents, businesses and employees.*

# HOUSEHOLD HAZARDOUS WASTE DISPOSAL

## Common household hazardous items include:

Automotive fluids • Car batteries • Oil filters • Flammables • All household batteries • Mercury • Oil-based paint  
Pesticides • Pool chemicals • Propane tanks • Paint, oil, gasoline, antifreeze & other automotive liquids (20-gallon limit)

## Spring & Fall Pick-ups

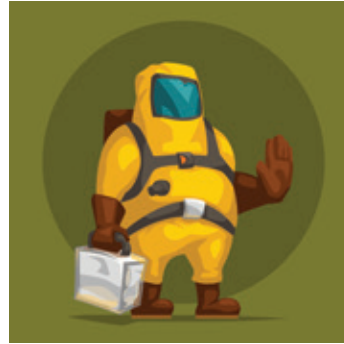
Many household products contain hazardous ingredients that can be harmful when used or discarded incorrectly. Glendale solid waste workers will come to you and make sure these items are properly disposed of.

## Options for Household Hazardous Waste Disposal Year-round

Many items received during household hazardous waste collection service are recyclable at local stores. Compact fluorescent bulbs (CFLs), lead-acid batteries (non-automotive), NiCad and rechargeable batteries are all recycled as part of nationwide programs. Contact the store where the items were purchased or call the service desk of a local store to find out where you can drop off these items.

## Freon Notice

For appliances with Freon units such as refrigerators, freezers, water coolers and window-mounted air conditioners, a \$20 fee will be added to your water bill (fee added for each Freon unit). This service requires a special pickup request which can be scheduled by calling 623-930-2660.



## Pick-up Process & Schedules:

Twice a year, residents may schedule appointments to have hazardous waste picked up. The process is as simple as 1, 2, 3!

1. During the appointment dates listed below, schedule a pickup and have a list ready of the items you have for disposal.
2. Place the items out for collection on the scheduled pickup day by 6 a.m.
3. The material is removed on your scheduled day and disposed of safely.

Mark your calendar for the dates listed below to be sure to clear your house of unwanted toxic and hazardous materials.

Call 623-930-2660 to make your appointment.  
[www.glendaleaz.com/householdhazardouswaste](http://www.glendaleaz.com/householdhazardouswaste)

## 2024 Household Hazardous Waste Schedule

### Spring

Appointments: February 26 – March 15  
Collections: March 11 – March 29

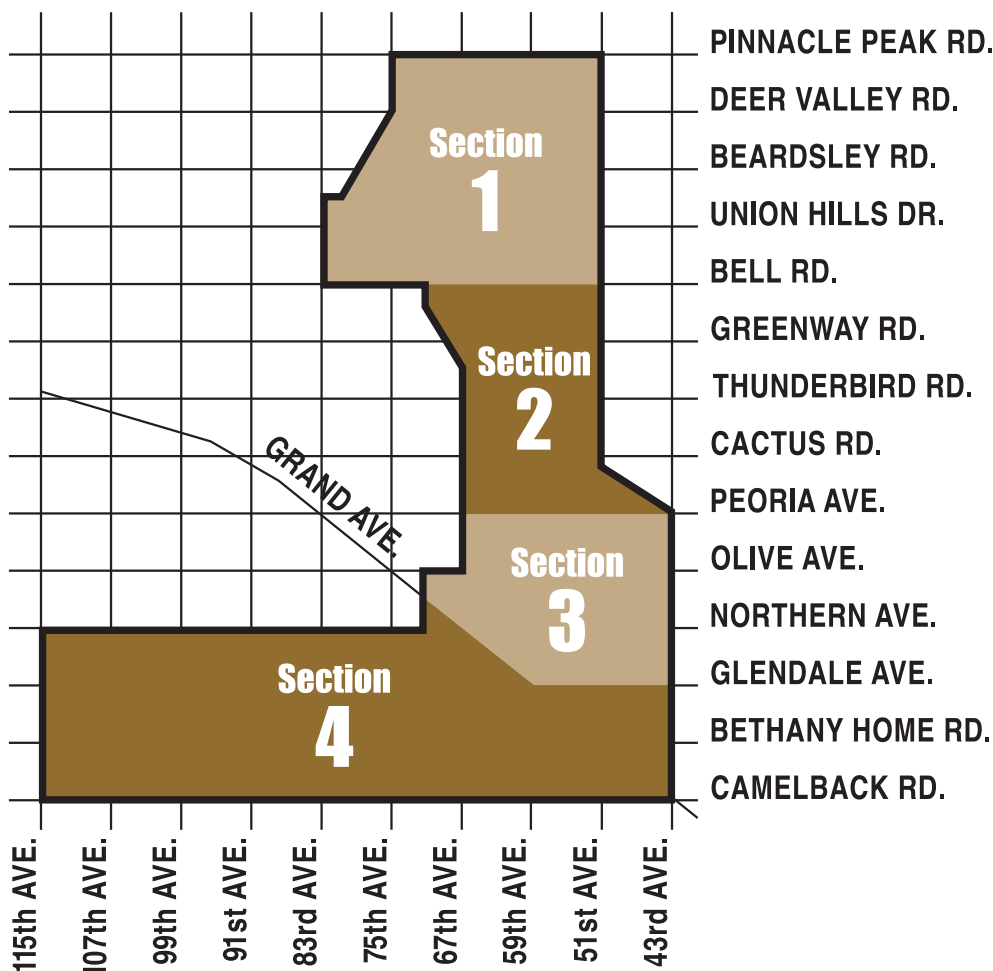
### Fall

Appointments: September 16 – October 11  
Collections: October 7 – October 25

# 2024 BULK TRASH PICKUP SCHEDULE

## Bulk Trash is Picking Up!

As a Glendale resident, you receive once a month bulk trash pickup service. Please follow the established bulk trash placement schedule as this will assist in keeping the operational costs down and the collection service timely. Street sweeping will take place 7 to 10 days after bulk trash collection.



### SECTION 1

January	1-5
February	5-9
March	4-8
April	1-5
May	6-10
June	3-7
July	1-5
August	5-9
September	2-6
October	7-11
November	4-8
December	2-6

### SECTION 2

January	8-12
February	12-16
March	11-15
April	8-12
May	13-17
June	10-14
July	8-12
August	12-16
September	9-13
October	14-18
November	11-15
December	9-13

### SECTION 3

January	15-19
February	19-23
March	18-22
April	15-19
May	20-24
June	17-21
July	15-19
August	19-23
September	16-20
October	21-25
November	18-22
December	16-20

### SECTION 4

January	22-26
February	26 - March 1
March	25-29
April	22-26
May	27-31
June	24-28
July	22-26
August	26-30
September	23-27
October	28 - November 1
November	25-29
December	23-27

# Recycle Right!

Reciclar Bien!



## Acceptable Items

Artículos Aceptables



**Plastic Bottles & Containers**  
Bottellas y Recipientes De Plastico



**Paper • Papel**



**Glass Bottles & Containers**  
Bottellas y Recipientes De Plastico



**Flattened Cardboard & Paperboard**  
Carton y Cartulina Aplanados



**Food & Beverage Cans**  
Lata De Comida y Bebida



**Pizza Boxes with minimal residue**  
Cajas De Pizza Con Residuos Minimios

**Glendale**  
ARIZONA

## Recyclables Need to be Clean, Dry and Empty.

After finishing with a recyclable item, rinse as necessary to remove any food. There is no need to remove caps or labels, but do remove non-recyclable items like plastic cereal box inserts. Cardboard needs to be empty of all packing materials and broken down.

All recyclables must be relatively clean, empty and dry. This does not mean putting them through a dishwasher. This is especially important during our current drought period. An example of relatively clean, empty and dry would be a mayonnaise jar that has been wiped clean of residue with a spatula or emptying a soda bottle in the sink. Both of those are clean and dry enough.

There are many polymers of plastic. The plastic industry uses a numbering system that you can find on the bottom of most plastic bottles and containers. Glendale recycles and accepts those with the symbol 1 and 2. Plastic that contains Styrofoam (cups, egg cartons, packing materials and containers) are not recycled in Glendale's recycling program. All of these do not have ready markets and are not economical to sort and recycle.

## ITEMS NOT ACCEPTED

- Carpeting and clothing
- Diapers
- Dog and cat food bags
- Drywall
- Fast food items - straws, cups and wrappers
- Furnace filters
- Hangers - no metal or plastic (of any kind)
- Household garbage (such as paper plates, bathroom items, dog waste, paper towels and napkins)
- Landscaping (leaves, grass, tree limbs, dirt and rocks)
- Non-container plastic (examples are plastic spoons, forks or knives, PVC pipe, bubble wrap and motor oil containers)
- Plastic bags (except for shredded paper placed in a clear plastic bag)
- Scrap metal
- Shoes
- Styrofoam
- Tile
- Toys



Scan for updated recycling information



## KNOW YOUR NO'S CONOZCA SUS NOES



When in doubt, throw it out!  
En caso de duda tirarlo!



**NO Plastic bags, Wrap, Film**  
Bolsas de Plastico, Envoltura, Pelicula



**NO Food, Yard Waste, Diapers, Pet Food Bags**  
Comida, Desechos de Jardin, Pañales, Bolsas de Comida Para Mascotas



**NO Styrofoam or Wax Items**  
Espuma de Poliestireno o Articulos de Cera



**NO Fabrics, Shoes, Toys, Bowling Balls**  
Telas, Zapatos, Juguetes, Bolas de Boliche



**NO Bagged, Boxed "Nesting" Recyclables**  
Reciclables "Nesting" en Bolsas o Cajas



**NO PVC, Tupperware, Plastic Hangers**  
Coluro de Polivinilo, Tupperware, Ganchos



**NO Tangles: Hoses, Wires, Ropes, Cords, Wire Hangers, String Lights**  
Enredadores - Mangueras, Alambres, Cuerdas, Cordones, Ganchos de Alambre, Luces de Cuerda



**NO Scrap metal: Pots/Pans, Car Parts**  
Chatarra, Ollas y Sartenes, Piezas de Automovil



**NO Batteries/Baterias**



**NO Computers, Printers, Cell Phones, Electric Appliances**  
Computadoras, Impresoras, Telefono Movil, Aparatos Electricos

### NO HAZARDOUS WASTE!

Automotive Fluids & Products, Paint, Chemicals, Flammables  
Fluidos y productos automotrices, Pintar, Productos Quimicos, Inflamables

## Los artículos reciclables deben estar limpios, secos y vacíos.

Después de terminar con un artículo reciclable, enjuáguelo como sea necesario para eliminar cualquier alimento restante. No tiene que remover las tapas o las etiquetas, pero sí debe remover los artículos que no sean reciclables tales como los insertos de plástico en las cajas de cereal. El cartón debe recortarse y estar vacío de todos los materiales de empaque.

Todos los materiales reciclables deben estar relativamente limpios, vacíos y secos. Esto no significa que debe lavarlos en la lavavajillas. Esto es especialmente importante durante nuestro período actual de sequía. Un ejemplo de artículos relativamente limpios, vacíos y secos sería un frasco de mayonesa al que se le han quitado los residuos con una espátula, o una botella de refresco que se haya vaciado completamente en el fregadero. Ambos artículos están limpios y lo suficientemente secos.

Hay muchos polímeros de plástico. La industria del plástico usa un sistema de numeración que se puede encontrar en la parte inferior de la mayoría de las botellas y de los recipientes de plástico. Glendale recicla y acepta aquellos con los símbolos 1 y 2. Los artículos de plástico que contienen espuma de poliestireno, tales como vasos, cajas de huevos, materiales de empaque y contenedores no se reciclan en el Programa de Reciclaje de Glendale. Todos éstos no cuentan con mercados listos y no es económico separarlos y reciclarlos.

## ARTÍCULOS QUE NO SON ACEPTADOS

- Alfombras y ropa
- Pañales
- Bolsas de comida para perros y gatos
- Tablarroca
- Artículos de comida rápida - popotes, vasos y envoltorios
- Filtros de la calefacción
- Ganchos - que no sean de metal o de plástico
- Basura doméstica (como platos de papel, artículos de baño, desechos de perros, toallas de papel y servilletas)
- Desechos de jardinería (hojas, pasto, ramas de árboles, tierra y rocas)
- Plástico que no sea de contenedores (por ejemplo, cucharas, tenedores o cuchillos de plástico, tubos de PVC, envoltura de burbujas y contenedores de aceite de motor)
- Bolsas de plástico (excepto para el papel triturado que se coloque en una bolsa de plástico transparente)
- Metal chatarra
- Zapatos
- Espuma de poliestireno
- Azulejo
- Juguetes

**Water Conservation Rebates** are a financial incentive where the cost is partially offset by the City of Glendale for its water customers in the Glendale water service area. The City of Glendale is not responsible for selection, installation, or performance of any product. Rebate requirements are subject to change. Review the rebate terms and conditions at [www.glendaleaz.com/rebates](http://www.glendaleaz.com/rebates)

## Single-Family Residential

## Non-Residential, Multi-family, HOA, Commercial & School

**WaterSense Toilet** Up to \$100 (tank toilet)

**ENERGY STAR Clothes Washer** Up to \$200



**Landscape New Home Xeriscape Installation**

- Up to \$500 for xeriscape (\$0.50/SF)
- Up to \$250 for artificial grass (\$0.25/SF)



**Existing Home Grass to Xeriscape**

- Up to \$3,000 for xeriscape (\$1.00/SF)
- Up to \$250 for artificial grass (\$0.25/SF)

**Pool/Spa Removal** Up to \$800 (\$400 base and \$1.00/SF)

**Water-Efficient Landscape Irrigation Technology**

Up to \$750



- WaterSense irrigation controller, up to \$250
- High-efficiency nozzles, up to \$5
- WaterSense spray sprinkler bodies, up to \$10
- Rain sensor, up to \$50
- Flow sensors w/leak detection, up to \$100



**WaterSense Toilet** Up to \$100 (tank toilet)  
Up to \$250 (flushometer valve toilet)  
*One rebate per year, max of \$10,000*

**Landscape Grass to Xeriscape**



- Up to \$10,000 for xeriscape (\$1.00/SF)
  - Up to \$250 for artificial grass (\$0.25/SF)
- One rebate per year*

**Water-Efficient Cooling Tower Technology** Up to \$1,000

For more information, scan the QR code, visit [www.glendaleaz.com/rebates](http://www.glendaleaz.com/rebates) or call 623.930.3596



## Is the Garbage Container Lid Always Open on Service Day?

Each single-family residence is assigned one garbage container and one recycling container. Typically, half of most household waste is recyclable, and the need for extra garbage capacity can be minimized or eliminated by recycling. The Maricopa County Department of Public Health requires lids to be closed at all times to control insect and rodent infestation.

Overfilled containers also create a service issue as debris can spill onto the ground and could prevent receiving service. Additional refuse containers can be requested by the resident for an additional fee.



## If it Fits in the Bin, Toss it in!

The Bulk Trash Collection Program is for residents who pay for solid waste service. Help control service costs by utilizing your garbage container bin because collection equipment is outfitted to collect bulky items. It takes staff longer to collect smaller items so ***If it Fits in the Bin, Toss it in!***

For those occasions when you can't wait until your next scheduled collection day, you can take your items to the landfill for disposal. With your city utility water bill and driver's license to show you are a Glendale resident, you get up to a ton free once a month. ([www.glendaleaz.com/landfill](http://www.glendaleaz.com/landfill)). You can also call for a bulk trash special pickup for a fee of **\$99** for the first 30 minutes of collection.

Appliances with Freon units such as refrigerators, freezers, water coolers and window-mounted air conditioners can be collected for a **\$20** fee per unit that will be added to your water bill. This service requires a special pick up request and is scheduled only during your bulk trash service week. Call 623-930-2660 to schedule a pickup.

For home remodels or cleanup projects, the city of Glendale has all your roll-off container needs competitively priced for your residential projects. Various rates are charged depending on the size of the bin and the number of services per month. To order any of the additional services offered by the city of Glendale Solid Waste Department, please call 623-930-2660.





## Monthly Bulk Trash Service

Glendale provides bulk trash pickup for large items that **WILL NOT** fit in your residential garbage container. Unwanted furniture, appliances, tree limbs and brush from your property can be disposed of at this time.

**When:** Place bulk trash out no earlier than 6 a.m. on the Thursday before your scheduled service week and no later than 6 a.m. on the Monday of your scheduled service week. It is a violation of city ordinance to put bulk trash out before or after the assigned period. Residents who fail to follow guidelines will not receive bulk trash collection service until the following month and are required to remove their items from public view until the next scheduled service.

### Do's:

- Place all bulk trash within 4 feet of the sidewalk edge toward your home.
- Stack items as neatly as possible, parallel to the street adjacent to your property line.
- No object placed out for collection shall exceed 4 feet in length, except bulk trash (for example, a couch).
- Keep glass separate from other items, in sturdy cardboard boxes. Boxes should be 2ft. x 2ft. x 2ft. or smaller, taped shut and clearly labeled "glass."
- Due to Freon, for refrigerator disposal there will be a \$20 fee added to your water bill per disposed refrigerator. Call 623-930-2660 to schedule a special pickup.

### Don'ts:

- Do not put out any of the following items: containers you want to keep soil, rock, gravel, concrete, shingles, bricks, blocks, drywall, tile, fiberglass, wet or dry mortar, sod, tree trunks, styrofoam, paint, oil, car batteries, pool chemicals or any other hazardous materials.
- Do not place bulk trash within 2 feet of city-owned containers, water meters, cable boxes, fire hydrants, block walls or other fixed objects.
- Tires must be taken to the Glendale Municipal Landfill.
- Do not pile bulk trash more than 6 feet high.
- Do not park vehicles within 10 feet of bulk trash piles.
- Do not put out styrofoam, including packing materials and foam peanuts.
- Do not put bulk trash in alleyways

**Bulk trash service will not be provided if a possible health or safety risk or chance of equipment or property damage exists.**

## MLK Day of Service Saturday, January 13

Throughout his life, Dr. Martin Luther King Jr. advocated for peace, unity and service. His commitment to creating change in his community is shared by many volunteers here in Glendale. MLK Day of Service is an annual tribute to the life of Dr. King and a way to donate vitamin-rich citrus to families in need. In partnership with HandsOn Greater Phoenix and St. Mary's Food Bank Alliance, we are looking for over 200 volunteers to help glean fruit. This project also helps beautify a Glendale landmark, keeping this community perfect for living, working and playing! Sign up today at [www.glendaleaz.com/CommunityVolunteerProgram](http://www.glendaleaz.com/CommunityVolunteerProgram).

# JANUARY *Clean & Green* 2024

SUNDAY	MONDAY	TUESDAY	WEDNESDAY	THURSDAY	FRIDAY	SATURDAY
31	<b>New Year's Day</b> City Offices Closed No Solid Waste Collection Bulk Trash Section 1	2	3	4	5	6
7	8 Bulk Trash Section 2	9	10	11	12	13 MLK Day of Service Volunteer Project
14	<b>Dr. Martin Luther King Jr. Day</b> City Offices Closed Bulk Trash Section 3	16	17	18	19	20 <b>LIVE!</b> MUSIC • FOOD • VIBES
21	22 Bulk Trash Section 4	23	24	25	26	27
28	29 No Bulk Trash Service	30	31	1	2	3



### RESIDENTIAL SOLID WASTE COLLECTIONS HOLIDAYS

Solid Waste collection schedules are only affected on these three holidays. For more information, please consult this calendar or visit [www.glendaleaz.com/trash\\_holidayschedule](http://www.glendaleaz.com/trash_holidayschedule)



[www.glendaleone.com](http://www.glendaleone.com)



## Recycle Right Wizard

### Right Stuff in the Right Bin

Contamination is a challenge all recycling programs battle daily. The digital tool, “Recycle Right Wizard,” allows residents to search a long list of items that will provide information on proper disposal (refuse or recycle bin). The Recycle Right Wizard is aimed at reducing contamination, reducing call volumes and diverting recyclable materials from the landfill. Test your recycling knowledge by going to [www.glendaleaz.com/recycling](http://www.glendaleaz.com/recycling).

## Household Hazardous Waste Appointments!

Call between February 26 & March 15

Collections run from March 11- 29. Check your shed and garage for unwanted hazardous items. Place items in a box marked “HHW” with everything clearly labeled in the original container. Schedule appointments at 623-930-2660. For more information, visit [www.glendaleaz.com/householdhazardouswaste](http://www.glendaleaz.com/householdhazardouswaste).

## Play the Sorting Game!

Complete the game and print your own Certificate of Achievement! Go to [www.glendaleaz.com/recycling](http://www.glendaleaz.com/recycling) and play today!



# FEBRUARY

## Clean & Green 2024

SUNDAY	MONDAY	TUESDAY	WEDNESDAY	THURSDAY	FRIDAY	SATURDAY
28	29	30	31	1	2	3
4	5 Bulk Trash Section 1	6	7	8	9	10
11	12 Bulk Trash Section 2	13	14	15	16	17
18	19 Bulk Trash Section 3 Presidents' Day City Offices Closed	20	21	22	23	24 <b>LIVE!</b> MUSIC • FOOD • VIBES
25	26 Bulk Trash Section 4	27	28	29	1	2
3	4	5	6	7	8	9

## Glendale Municipal Landfill

The city of Glendale Municipal Landfill is located at 11480 W. Glendale Avenue, on the north side of the road. The landfill is a responsible, progressive and an environmentally sound long-term solution to solid waste management, essential to the future health, welfare and prosperity of residents.

Solid Waste inspectors stay busy inspecting 90-gallon recycling containers placed out for service to decrease contamination in the recycling stream. Reducing contamination in the recycling stream keeps processing fees as low as possible. If contamination is found, an inspector will leave educational materials. If the contamination is severe, a no service tag will be left explaining why service was not provided. An inspector also performs refuse container inspections looking for unbagged garbage and hazardous items such as paint, automotive oil and corrosive chemicals.

### Hours of Operation:

Monday – Friday: 7:30 a.m. - 4 p.m.

Saturday: 7 a.m. - 3 p.m.

Closed: Sundays & official city holidays

[www.glendaleaz.com/landfill](http://www.glendaleaz.com/landfill)



[www.glendaleone.com](http://www.glendaleone.com)



## Glendale is Drought Ready

Due to long-term drought, climate change, and increased demand, the Colorado River system is supplying less water to the Southwestern United States and Mexico today than historically.

To protect the two major Colorado River reservoirs - Lake Powell and Lake Mead - from reaching critically low levels, the federal government has declared that the Colorado River will be in a Tier 1 shortage for 2024. This means that Arizona will see an 18% reduction in the state's Colorado River water supply and Glendale will remain in Stage One - Drought Watch of the City's Drought Management Plan. Glendale municipal properties and operations will continue to meet the Drought Management Plan's 5% water reduction goal and residents and businesses are encouraged to voluntarily reduce their water use.

### WAYS TO SAVE

Glendale offers a diversity of free programs and services to help customers save water:

- Receive rebates for removing a grass lawn and in-ground pool/spa.
- Receive a rebate for upgrading to a WaterSense toilet and irrigation controller.
- Receive a rebate for upgrading to an ENERGY STAR clothes washer.
- Register for the Green Living Series classes
- Subscribe to the Green Living E-Newsletter
- Get a conservation kit that contains a high-efficiency showerhead, garden hose nozzle, toilet tank water displacement bag, and water-wise publications.

For more information, call 623-930-3596 or visit [www.glendaleaz.com/waterconservation](http://www.glendaleaz.com/waterconservation).

# MARCH *Clean & Green* 2024

SUNDAY	MONDAY	TUESDAY	WEDNESDAY	THURSDAY	FRIDAY	SATURDAY
25	26	27	28	29	1	2 Folk & Heritage Festival
3 Folk & Heritage Festival	4 Bulk Trash Section 1	5	6	7	8	9 18th Annual Glendale Serve Day
10	11 Bulk Trash Section 2	12	13	14	15	16
EPA WaterSense Fix-A-Leak Week   <a href="http://www.epa.gov/watersense/fix-leak-week">www.epa.gov/watersense/fix-leak-week</a>						
17	18 Bulk Trash Section 3	19	20	21	22	23 LIVE! MUSIC • FOOD • VIBES
24	25 Bulk Trash Section 4	26	27	28	29	30
31	1	2	3	4	5	6

## Apply for a Toilet Rebate

New! Glendale residential water customers can receive up to \$100 for replacing an inefficient toilet with a WaterSense toilet. Review the rebate terms and conditions and apply at [www.glendaleaz.com/rebates](http://www.glendaleaz.com/rebates).

## Become a Leak Buster

Learn to detect leaks at home with the help of the Smart Home Water Guide and a Toilet Leak Detection card. Request free copies of these publications at [www.glendaleaz.com/waterconservation](http://www.glendaleaz.com/waterconservation) or visit Smart Home Water Guide at [smarthomewatguide.org](http://smarthomewatguide.org).

## Inspiration at the Xeriscape Garden

A community treasure, the Glendale Xeriscape Demonstration Garden is a living showcase of the diversity and abundance of water-wise plants. The garden is certified as a Wildlife Habitat and Monarch Waystation and is home to hummingbirds, butterflies, bees, and lizards. Wander through the garden's themed areas to experience the beauty and diversity of desert-friendly landscapes. This award-winning garden is free to visit and open to the public from dawn to dusk. Located at 5959 W. Brown St.

 /GlendaleAZGarden

**GlendaleOne**  
YOUR ONE STOP FOR SERVICE

[www.glendaleone.com](http://www.glendaleone.com)



## Play a Part in Valley Bike Month

There's no better time to enjoy the benefits of bicycling than in the Valley of the Sun's perfect spring weather.

Valley Bike Month, which began in the late 1980s as a single Bike to Work Day event, takes place in April. This event has expanded over the years as cities from all over the region have joined in, eventually becoming a month-long celebration of bicycling.

The City of Glendale invites you to take advantage of the benefits of biking this April. Whether it's a ride to work, a lunch break from your home office, or a weekend ride around the neighborhood with family or friends, get on your bike and go for a spin!

Bicycling is beneficial to both the environment and your health. It's a great form of exercise, good for your physical and mental health and a convenient mode of transportation that doesn't pollute the environment or add to traffic congestion. It's a win for everyone!

Valley Bike Month offers a variety of ways to participate, including the Bike Month Pledge, Team Challenges and Share the Ride Contests. To learn more about Valley Bike Month events, go to [www.sharetheride.com](http://www.sharetheride.com).

The City of Glendale also has its bike event, the Glendale Family Bike Ride, which attracts cyclists from all over the Valley. Every year, the event kicks off at Sahuaro Ranch Park and is open to riders of all skill levels. Register online starting in February at [www.glendaleaz.com/familybikeride](http://www.glendaleaz.com/familybikeride) or at the park the day of the event.

# APRIL *Clean & Green* 2024

SUNDAY	MONDAY	TUESDAY	WEDNESDAY	THURSDAY	FRIDAY	SATURDAY
31	1 Bulk Trash Section 1	2	3	4	5	6
Glendale Family Bike Ride	8 Bulk Trash Section 2	9	10	11	12	LIVE! MUSIC • FOOD • VIBES
7	15 Bulk Trash Section 3	16	17	18	19	20
14	22 Bulk Trash Section 4	23	24	25	26	27
21	29 No Bulk Trash Service	30	1	2	3	4
5	6	7	8	9	10	11

## Improved Traffic Signals

Work has started on the project to improve traffic signals on key Glendale street corridors. These corridors are Glendale Avenue between I-17 and Loop 101, and 59th Ave from Camelback to the north city limits. This project will help the city optimize the traffic signal timing at the intersection along both corridors thus reducing travel delays. These improvements can adjust traffic signal operations in real-time, which in turn reduces delays, travel times and vehicle emissions. The smart detection system has been identified as an important transportation systems tool to provide improved traffic signal timing adjustments in response to varying traffic volumes and congestion.

## Long-Range Transportation Plan

The City of Glendale is currently working to update the Long-Range Transportation Plan. This plan is an essential element in the planning process that includes a vision, goals and objectives for future transportation improvements citywide. This plan examines the City's current conditions as well as engages the community to identify the needs of all users and all modes of transportation. Providing facilities to accommodate alternative modes of transportation allows the reduction of fuel usage, reduction of vehicle emissions and improves public health. This plan will guide the City to develop sustainable, equitable and environmentally conscious decisions.





## Understanding Your Monthly Sewer Charges

You may notice a change in the monthly sewer fee in your water bill each May. Every year the city of Glendale recalculates each customer's sewer usage based on their water use billed January through March. If you are aware of high water use between January and March, you may be eligible for a fee adjustment and must submit a Sewer Appeal form. Access the form at [www.glendaleaz.com](http://www.glendaleaz.com) and type "Sewer Appeal" in the Search Function. Appeals are accepted up to 90 days after the May billing.

### Examples of typical sewer appeals:

- Leaks (January through March bills)
- Filling a new pool or draining and refilling an existing pool (January through March bills)
- Outdoor watering during the winter months, typically associated with larger than normal landscaping

New residents or customers who do not have a full 3 months' winter water usage, will be assigned usage based on the average of all customers with a similar type of property. For more information, call 623-930-3190.

## Report Landscape Water Waste

Water is a precious resource and it's important to use it wisely. If you observe landscape-related water waste, please take a photo and report it at [www.glendaleone.com](http://www.glendaleone.com) or call 623-930-3535.

## Apply for a Smart Irrigation Controller Rebate

New! Glendale residential water customers can receive up to \$250 for upgrading to a WaterSense irrigation controller. Review the rebate terms and conditions and apply at [www.glendaleaz.com/rebates](http://www.glendaleaz.com/rebates).

**Pro Tip:** Do a walk-about in your landscape at least once a month to check for irrigation leaks. In addition to checking on valves, connections, sprinkler heads, and drip emitters, look for wet spots, holes in the ground, and fine soil particles.

## Landscape Watering – It's as Easy as 1-2-3!

The Landscape Watering by the Numbers publication tells you everything you need to know about watering your trees, shrubs, lawn, and more. Request a free copy at [www.glendaleaz.com/waterconservation](http://www.glendaleaz.com/waterconservation) or access it online at [wateruseitwisely.com](http://wateruseitwisely.com).

## Glendale's Water Quality

Water is a vital resource for our desert community, and the quality of your drinking water is very important to us. The Glendale Water Services Department tests, analyzes, and monitors water quality many times each day to ensure that the water provided is clean and safe to use. To learn more about your drinking water quality, visit [www.glendaleazwater.com](http://www.glendaleazwater.com).

# MAY *Clean & Green* 2024

SUNDAY	MONDAY	TUESDAY	WEDNESDAY	THURSDAY	FRIDAY	SATURDAY
28	29	30	1	2	3	4
Drinking Water Week   <a href="http://www.awwa.org">www.awwa.org</a>						
5	6 Bulk Trash Section 1	7	8	9	10	11
National Public Gardens Week   <a href="http://www.publicgardens.org">www.publicgardens.org</a>						
12	13 Bulk Trash Section 2	14	15	16	17	18
19	20 Bulk Trash Section 3	21	22	23	24	25
26	27 Memorial Day City Offices Closed Bulk Trash Section 4	28	29	30	31	1
2	3	4	5	6	7	8



## Be Monsoon Ready!

The monsoon season officially runs from June 15 to September 30 as established by the National Weather Service.

Polluted stormwater runoff is the nation's greatest threat to clean water. When it rains, stormwater flows over driveways, sidewalks, streets, and parking lots, where it picks up pollutants, such as trash, oil, vehicle brake dust, fertilizers, pesticides, and pet waste. These pollutants are transported to our rivers, washes, retention areas, and parks where they can have adverse effects on the environment and people.

### What YOU can do to protect our local waterways:

- Clean rain gutters and direct downspouts away from paved surfaces.
- Sweep debris off driveways, sidewalks, and patios and dispose of it in the trash can.
- Pick up pet waste and dispose of it in the trash can.
- Minimize the use of pesticides, herbicides, and fertilizers and avoid the use of these chemicals before it rains.
- Per City Code: Keep irrigation water on your landscape, not the street.
- Per City Code: Only drain or backwash your pool water into the sanitary sewer, not the street.
- Schedule a household hazardous waste disposal pick-up with the Glendale Solid Waste Division at 623-930-2660. Never pour chemicals down the storm drain!

For more information, visit [www.glendaleaz.com/environmentalprotection](http://www.glendaleaz.com/environmentalprotection).

*If you experience extra debris caused by monsoon storms, contact customer service at 623-930-2660.*

# JUNE *Clean & Green* 2024

SUNDAY	MONDAY	TUESDAY	WEDNESDAY	THURSDAY	FRIDAY	SATURDAY
26	27	28	29	30	31	1
2	3 Bulk Trash Section 1	4	5	6	7	8
9	10 Bulk Trash Section 2	11	12	13	14	15
16	17 Bulk Trash Section 3	18	19	20	21	22
23	24 Bulk Trash Section 4	25	26	27	28	29
30	1	2	3	4	5	6

## Floodplain Insurance – Risk Rating 2.0

FEMA has fully implemented the National Flood Insurance Program (NFIP) Risk Rating 2.0 as of April 1, 2023. The premiums are calculated based on structure-specific data, property characteristics, and geography. The methodology leverages industry best practices and cutting-edge technology to enable FEMA to deliver rates that are actuarially sound, equitable, easier to understand and better reflect a property's flood risk.

Glendale participates in the Community Rating System (CRS) through the NFIP which allows for a CRS Discount of 15% on flood insurance premiums.

For more information on floodplain insurance and how to obtain coverage, please refer to [www.floodsmart.gov](http://www.floodsmart.gov).

## Soak Up the Rain

**Pro Tip:** If you receive at least ½" of rainfall, you can skip your next irrigation cycle. Simply use the OFF, STOP, or RAIN setting on your controller to pause the watering cycle without disturbing your programs. Take it a step further by adding rainwater harvesting features to your landscape. Create wide and shallow depressions where water can be soaked up by plants, or collect it in a rain barrel. For more information, visit [bit.ly/WUIWRainHarvesting](http://bit.ly/WUIWRainHarvesting).



## National Park & Recreation Month

Park and Recreation Month has been celebrated nationally since July 1985 to promote building strong, vibrant and resilient communities. Park and recreation professionals make a positive impact on the lives of community members every day through recreation and education programming and maintaining safe neighborhood parks and facilities for the well-being of children and adults.

We welcome you to experience the outstanding parks, recreation programs, facilities, and services that Glendale offers. For more information, visit [www.glendaleaz.com/parksandrec](http://www.glendaleaz.com/parksandrec).

## Help Reduce Air Pollution

Ground level ozone forms in the summer months when vehicle emissions and activities using gasoline, paints, solvents, and other chemicals react with the sunlight and heat. Help reduce ozone pollution by fueling your vehicle after dark, teleworking, avoiding idling in drive-thrus, and scheduling home improvement projects in the cooler months. For more tips and information, visit [Maricopa.gov/AQCleanAir](http://Maricopa.gov/AQCleanAir).

## Apply for a Pool/Spa Removal Rebate

New! Glendale residential water customers can receive up to \$800 for removing an in-ground pool or spa. Review the rebate terms and conditions and apply at [www.glendaleaz.com/rebates](http://www.glendaleaz.com/rebates).

**Pro Tip:** Reuse your pool or spa water on your Bermuda grass lawn or drain into the sanitary sewer cleanout. It is against City of Glendale Code to drain pool/spa water into a street, gutter, or storm drain.

## Apply for a Landscape Rebate

Glendale residential water customers can receive up to \$3,000 for converting grass lawns to desert-friendly landscapes. Review the rebate terms and conditions and apply at [www.glendaleaz.com/rebates](http://www.glendaleaz.com/rebates).

**Pro Tip:** Visit the Glendale Xeriscape Demonstration Garden to get ideas for your own water-wise landscape. This award-winning garden surrounds the Glendale Main Library (5959 W. Brown St., Glendale AZ 85302) and is open dawn to dusk.

## Help Your Landscape Survive the Summer

A good watering regime is crucial to improving the drought resiliency of your landscape. Adjust your irrigation schedule to water deeply, but less often. Watering 1 to 3 hours before sunrise or after sunset will reduce water loss due to evaporation. Maintaining a 2-inch layer of wood mulch or gravel will also help the soil retain moisture throughout the day. Learn more with the *Landscape Watering by the Numbers* guide by requesting a free copy at [www.glendaleaz.com/waterconservation](http://www.glendaleaz.com/waterconservation) or [wateruseitwisely.com](http://wateruseitwisely.com).

# JULY *Clean & Green* 2024

SUNDAY	MONDAY	TUESDAY	WEDNESDAY	THURSDAY	FRIDAY	SATURDAY
30	1 Bulk Trash Section 1	2	3	4 Independence Day City Offices Closed	5	6
7	8 Bulk Trash Section 2	9	10	11	12	13
14	15 Bulk Trash Section 3	16	17	18	19	20
21	22 Bulk Trash Section 4	23	24	25	26	27
28	29 No Bulk Trash Service	30	31	1	2	3
4	5	6	7	8	9	10



## Right-of-Way Landscaping

The Transportation Department’s Right-of-Way (ROW) Division maintains over 27 million square feet of streetside landscape that includes over 18,000 trees. The City has developed a long-term landscape restoration and maintenance plan. The plan involves the goal of a long-term sustainable landscape infrastructure while striking a balance between water conservation and aesthetic appeal. Key considerations include the use of drought-tolerant plant material, decorative rock, water harvesting features and smart irrigation systems. As part of this effort, between 4,000 and 5,000 new trees will be planted within the public right-of-way over the next seven years.

Maintaining a healthy urban tree canopy brings many benefits to the quality of life for Glendale residents which include better air quality, wildlife corridor benefits, energy savings, better water quality, reduced noise pollution, urban beautification and mental health/stress relief. In a nutshell, protecting, preserving, and restoring our urban forest ensures that our City footprint remains cool and beautiful.

## Active Transportation Plan Projects Update

Active Transportation describes person-powered ways of getting around our streets, such as walking, bicycling, rolling a wheelchair or a mobility device. The City completed its Active Transportation Plan (ATP) in 2019, focusing on a complete active transportation network that encourages physical activity and environmental sustainability, emphasizes regional connectivity and provides residents with transportation choices. Since then, various active transportation projects have been completed and additional are underway which help pave the way for a strong active transportation network.

- **67th Avenue Bike Lanes** – Installation of bike lanes on a 5-mile section of 67th Avenue between Missouri Avenue and Cholla Street. The bicycle lanes will be installed within the existing roadway cross-section by narrowing travel and turn lanes. The project improves mobility and safety in this area.
- **Central Core Sidewalk Infill Near Downtown** – The project improves sidewalk connectivity and pedestrian mobility by constructing missing sidewalk segments. The project will also upgrade curb ramps to Americans with Disability Act standards.
- **Maryland Active Transportation Improvements** – This project is to infill missing sidewalks and improve bicycle facilities in the area between Maryland Avenue and Bethany Home Road. The objective of the project is to improve mobility and access to businesses, bus stops and residences.
- **Missouri Active Transportation Improvements** – The project is to infill missing sidewalks and improve bicycle facilities in the area immediately west of Grand Avenue, between Missouri Avenue and Bethany Home Road. The project will construct approximately 2.2 total linear miles of missing sidewalks, 1.5 miles of new bicycle lanes and 0.5 miles of shared bicycle facilities.

# AUGUST *Clean & Green* 2024

SUNDAY	MONDAY	TUESDAY	WEDNESDAY	THURSDAY	FRIDAY	SATURDAY
28	29	30	31	1	2	3
4	5 Bulk Trash Section 1	6	7	8	9	10
11	12 Bulk Trash Section 2	13	14	15	16	17
18	19 Bulk Trash Section 3	20	21	22	23	24
25	26 Bulk Trash Section 4	27	28	29	30	31
1	2	3	4	5	6	7



## National Library Card Sign-Up Month

September is National Library Card Sign-Up Month. Your Glendale Public Library card gives you direct access to shared physical and electronic resources, from books to movies to computers, streaming services, virtual programming, and student resources; all while helping you save money and the planet. For more information, visit [www.glendaleazlibrary.com](http://www.glendaleazlibrary.com).

## Trees Are Our Allies

Desert-adapted trees improve our quality of life. They help reduce the urban heat island effect, clean the air and stormwater, provide oxygen and shade, reduce energy costs, and raise property values. Fall is an ideal time for planting, to give trees time to establish before the onset of summer heat. Check out the following resources to get ready for your tree planting:

1. Find the perfect low-water-use tree for our desert climate. Request a copy of the Arizona Municipal Water Users Association's *Landscape Plants for the Arizona Desert* publication or visit [www.amwua.org/plants](http://www.amwua.org/plants).
2. Learn how to plant a tree and contribute to a more sustainable future for this environment. Check out the ultimate Arizona resource for fall landscaping and tree planting at [www.waterplantitwisely.com](http://www.waterplantitwisely.com).
3. Hire a professional with a high level of knowledge and experience in tree care to protect your landscape investment. Find a certified arborist at [www.isa-arbor.com/home.aspx](http://www.isa-arbor.com/home.aspx).
4. Check with your energy provider to take advantage of free shade trees or wood chips that may be available to you.

## Free Seeds for Your Yard and Garden

Take home free seeds through the Glendale Seed Library that is available at all four library locations. Most of the seeds are sourced from Native Seeds/SEARCH and provided by the Glendale Water Services Department – Conservation & Sustainable Living Division. Additionally, a local organization, Valley of the Sun Quail Forever, donated 800 wildflower seed packets to encourage the public to create wildlife habitats at home! For more information, visit [www.glendaleazlibrary.com](http://www.glendaleazlibrary.com).

## Household Hazardous Waste Appointments!

**Call between September 16 & October 11**

Collections run from October 7-25. Check your shed and garage for unwanted hazardous items. Place items in a box marked "HHW" with everything clearly labeled in the original container. Schedule appointments at 623-930-2660. For more information, visit [www.glendaleaz.com/householdhazardouswaste](http://www.glendaleaz.com/householdhazardouswaste)

## Get Water-Wise News

Stay up to date on the most recent water conservation news and resources. Learn about conservation events, landscaping tips, and fun desert plants by signing up for the Conservation and Sustainable Living Division's newsletter at [www.glendaleaz.com/waterconservation](http://www.glendaleaz.com/waterconservation).

# SEPTEMBER *Clean & Green* 2024

SUNDAY	MONDAY	TUESDAY	WEDNESDAY	THURSDAY	FRIDAY	SATURDAY
	Labor Day City Offices Closed					
1	2 Bulk Trash Section 1	3	4	5	6	7
8	9 Bulk Trash Section 2	10	11	12	13	14
15	16 Bulk Trash Section 3	17	18	19	20	21
22	23 Bulk Trash Section 4	24	25	26	27	28
29	30 No Bulk Trash Service	1	2	3	4	5
6	7	8	9	10	11	12



## Be a Neat Neighbor

The Glendale Code Compliance Division enforces city codes that maintain established community standards that preserve and promote the health, safety and living environment of our community and neighborhoods. Please be a neat neighbor by removing vehicles in disrepair, eliminate storage in front of the house and keep grass and weeds cut to 6 inches or less in height, as required by Glendale city code. For more information, visit [www.glendaleaz.com/codecompliance](http://www.glendaleaz.com/codecompliance) or call 623-930-3610.

## Apply for a Clothes Washer Rebate

New! Glendale residential water customers can receive up to \$200 for upgrading to an ENERGY STAR clothes washer. Review the rebate terms and conditions and apply at [www.glendaleaz.com/rebates](http://www.glendaleaz.com/rebates).

**Pro Tip:** Run full loads whenever possible since clothes washers typically use about the same amount of energy regardless of the load size.

## Go for Gold!

Overseeding your lawn with winter ryegrass can use more than 8,000 gallons of water for every 1,000 square feet of grass. While Bermuda grass thrives in the summer heat, it will go dormant in the cooler months and transform into a golden hue. Skip overseeding and save money, time and effort this fall. Learn more at [bit.ly/SkipOverseed](http://bit.ly/SkipOverseed).

# OCTOBER *Clean & Green 2024*

SUNDAY	MONDAY	TUESDAY	WEDNESDAY	THURSDAY	FRIDAY	SATURDAY
29	30	1	2	3	4	5
6	7 Bulk Trash Section 1	8	9	10	11	12
13	14 Bulk Trash Section 2	15	16	17	18	19
National Teen Driver Safety Week						
20	21 Bulk Trash Section 3	22	23	24	25	26
27	28 Bulk Trash Section 4	29	30	31 Halloween	1	2
3	4	5	6	7	8	9

## Bus Stop Improvements

The City of Glendale has over 580 transit bus stops. Of those bus stops, 193 locations have shelters and other amenities for transit users. The other amenities include pads and walkways for better accessibility, trash receptacles and new signage. Last year, the City improved and enhanced 53 stops. This year, the City has planned improvements at another 32 bus stop locations.

## National Teen Driver Safety Week

October 20-26, 2024 is National Teen Driver Safety Week. Motor vehicle crashes are the leading cause of death for teens (15-18 years old) in the United States. Distracted driving is one of the fastest-growing safety issues on the roads today. To address this concern, the City of Glendale has partnered with the National Safety Council and Glendale High Schools to teach young drivers how to take control of driving situations by taking personal responsibility for their actions, attitudes and behaviors using the Alive at 25 training program.

 /GlendaleAZTransportation

 @glendaletransportation

 **GlendaleOne**  
YOUR ONE STOP FOR SERVICE

[www.glendaleone.com](http://www.glendaleone.com)



# Glendale Collects Cell Phones for America Recycles Day

Time to clean out the drawers for those old cell phones! In celebration of America Recycles Day on November 15, Glendale has developed a special cell phone recycling program throughout November. The cell phones will go to the Glendale Family Advocacy Center to be refurbished and will become available for victims of stalking and domestic violence. Statistics show that cell phones are replaced after only 18 months of use. It is important to keep cell phones out of landfills. For drop-off locations, visit [www.glendaleaz.com](http://www.glendaleaz.com) or call 623-930-2660.

**NO ELECTRONICS**  
*SIN ELECTRONICA*

**Unacceptable Recycling Items**  
*Articulos de Reciclaje Inaceptable*

**NO Computers, Printers, Cell Phones, Electric Appliances**  
*Computadoras, Impresoras, Telefono Movil, Aparatos Electricos*

*When non-recyclable items enter the recycle stream it's called contamination which increases rates. Help use kick it to the curb, visit [www.glendaleaz.com/recycling](http://www.glendaleaz.com/recycling).*

# NOVEMBER Clean & Green 2024

SUNDAY	MONDAY	TUESDAY	WEDNESDAY	THURSDAY	FRIDAY	SATURDAY
27	28	29	30	31	1	2
3	4 <small>Bulk Trash Section 1</small>	5	6	7	8	9
10	11 <small>Veterans Day City Offices Closed</small>	12	13	14	15 <small>America Recycles Day</small>	16
17	18 <small>Bulk Trash Section 2</small>	19	20	21	22	23
24	25 <small>Bulk Trash Section 3</small>	26	27	28 <small>Thanksgiving Day City Offices Closed No Solid Waste Collection</small>	29 <small>Thanksgiving Holiday City Offices Closed</small>	30
	25 <small>Bulk Trash Section 4</small>					

## Cease the Grease

Fats, oils, and grease (FOG) poured down your kitchen drain will cool and harden in your pipes and lead to blockages, which can potentially damage your home, cause raw sewage to backup into city streets, lawns, storm drains, threaten public health and cause damage to the environment. The easiest way to solve the problem of grease blockage is to keep grease out of the drains in the first place. Help prevent sewer blockages by following these best practices:

- Don't pour FOG down sinks, drains or toilets.
- For small amounts of grease, pre-wipe pots and pans with paper towels before washing.
- Scrape food residue from dishes and cookware into the trash before washing.

## Think Before You Flush

Your toilet and sink are not trash cans. Wipes, cotton balls, swabs, dental floss, wrappers, feminine hygiene products and kitty litter all stick to the walls of underground pipes. These items do not dissolve and combine with FOG in the sewers to cause blockages. Toilet paper is the only flushable product because it dissolves in water. There is no such thing as a "flushable wipe." When cleaning wipes, facial wipes and baby wipes are flushed, they can cause blockages, leading to sewer overflows. Help keep your pipes and the City's sanitary sewer system clear of debris by disposing of items in the trash. For more information, visit [www.glendaleaz.com/environmentalprotection](http://www.glendaleaz.com/environmentalprotection).

THANKSGIVING

Christmas

New Year's Day

**RESIDENTIAL SOLID WASTE COLLECTIONS HOLIDAYS**

Solid Waste collection schedules are only affected on these three holidays. For more information, please consult this calendar or visit [www.glendaleaz.com/trash\\_holidayschedule](http://www.glendaleaz.com/trash_holidayschedule)

YOUR ONE STOP FOR SERVICE

[www.glendaleone.com](http://www.glendaleone.com)



## From the Heart

From the Heart (FTH) is a unique partnership of Glendale residents, the city of Glendale, and local community agencies. FTH puts your donation to work every day. Whether serving meals to the elderly, giving emergency help to homeless families, or supporting abused children, FTH gives to non-profit agencies that provide services to our community. Since FTH began in 1997, more than \$2.5 million has been raised and distributed to non-profit agencies serving Glendale residents. Donate today! For more information, visit <https://bit.ly/GlendaleAZFTH>.

## Burn Cleaner, Burn Better

Keep our air clean and breathe easier, don't burn wood on a No Burn Day! Convert your wood burning fireplace to natural gas or electric, or switch to other cleaner-burning alternatives. You can still enjoy the glow of a warm fire while reducing harmful smoke pollution! For the latest air quality forecast and No Burn Day status, download the free Clean Air Mobile App through the App Store or Google Play, visit [Maricopa.gov/AQCleanAir](http://Maricopa.gov/AQCleanAir) each day, or call 602-506-6400.

## Water-Saving Stocking Stuffers

Need help with your last-minute shopping? Water-efficient showerheads, faucets, and irrigation technology not only save water but can save you money on your water bill. In the desert, there's no greater gift than the gift of water conservation. Find a list of all EPA WaterSense-labeled products at [lookforwatersense.epa.gov/](http://lookforwatersense.epa.gov/).

# DECEMBER *Clean & Green* 2024

SUNDAY	MONDAY	TUESDAY	WEDNESDAY	THURSDAY	FRIDAY	SATURDAY
1	2 Bulk Trash Section 1	3	4	5	6	7
8	9 Bulk Trash Section 2	10	11	12	13	14
15	16 Bulk Trash Section 3	17	18	19	20	21
22	23 Bulk Trash Section 4	24	25 Christmas City Offices Closed No Solid Waste Collection	26	27	28
29	30 No Bulk Trash Service	31	1 Happy New Year! City Offices Closed No Solid Waste Collection	2	3	4

## Save Water and Lower Your Sewer Fee

Did you know that your water use billed in January, February, and March is used to calculate your annual sewer fee? Starting in December, reduce your water use during these winter months to lower your sewer charge. Follow these easy tips to lower your monthly water bill:

**Follow these easy tips to lower your monthly water bill:**

- Fix leaky toilets, faucets, and showerheads.
- Fix irrigation and pool leaks.
- Adjust your irrigation schedule monthly.

If you have a leak or fill your pool during the sewer average period, you can appeal your sewer charge. For more information, visit [www.glendaleaz.com/watersewertrashbilling](http://www.glendaleaz.com/watersewertrashbilling).

## 'Tis the Season to Treecycle

*Beginning December 28 through January 6*

The Solid Waste Department has established several sites throughout the city where residents can drop off trees for recycling: (single, unbagged tree, remove all decorations, tree stands, metal stakes and nails.)

For Treecycle locations, call 623-930-2660 or visit [www.glendaleaz.com/sanitation/bulktrash.cfm](http://www.glendaleaz.com/sanitation/bulktrash.cfm)



### RESIDENTIAL SOLID WASTE COLLECTIONS HOLIDAYS

Solid Waste collection schedules are only affected on these three holidays. For more information, please consult this calendar or visit [www.glendaleaz.com/trash\\_holidayschedule](http://www.glendaleaz.com/trash_holidayschedule)



[www.glendaleone.com](http://www.glendaleone.com)